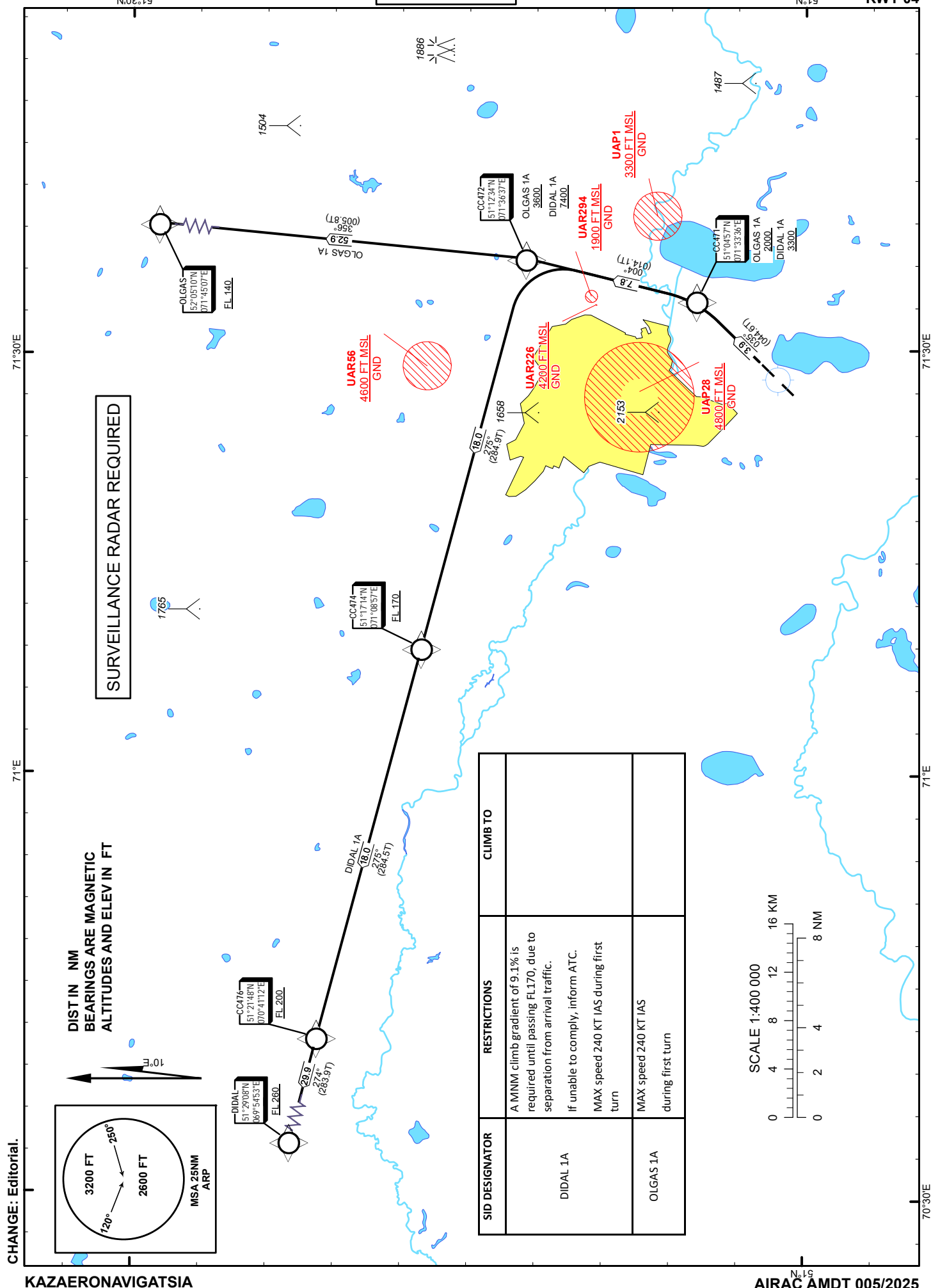


ASTANA
NURSULTAN NAZARBAYEV
INTERNATIONAL AIRPORT
RWY 04



**TABULAR
DESCRIPTION**

DIDAL 1A RWY04											
Serial Number	Path Descriptor	Waypoint Identifier	Fly - over	Course °M(°T)	Magnetic Variation(°)	Distance NM	Turn Direction	Altitude FT	Speed KT	VPA (°)	Navigation Specification
10	CF	CC471	-	35(44.6)	10	3.9	-	+3300	-240	5.2	RNAV1
20	TF	CC472	-	4(14.1)	10	7.8	L	+7400		5.2	RNAV1
30	TF	CC474	-	275(284.9)	10	18	L	+FL170		5.2	RNAV1
40	TF	CC476	-	275(284.5)	10	18	-	+FL200		1.9	RNAV1
50	TF	DIDAL	-	274(283.9)	10	29.9	-	+FL260		1.9	RNAV1

WAYPOINT LIST

DIDAL 1A		
Waypoint Identifier	Coordinates	
DER	510210.90N	0712915.64E
CC471	510457.35N	0713335.86E
CC472	511233.52N	0713637.17E
CC474	511713.85N	0710857.33E
CC476	512147.69N	0704111.75E
DIDAL	512908.00N	0695453.00E

**TABULAR
DESCRIPTION**

OLGAS 1A RWY04											
Serial Number	Path Descriptor	Waypoint Identifier	Fly - over	Course °M(°T)	Magnetic Variation(°)	Distance NM	Turn Direction	Altitude FT	Speed KT	VPA (°)	Navigation Specification
10	CF	CC471	-	35(44.6)	10	3.9	-	+2000	-240	1.9	RNAV1
20	TF	CC472	-	4(14.1)	10	7.8	L	+3600		1.9	RNAV1
30	TF	OLGAS	-	356(5.8)	10	52.9	L	+FL140		1.9	RNAV1

WAYPOINT LIST

OLGAS 1A		
Waypoint Identifier	Coordinates	
DER	510210.90N	0712915.64E
CC471	510457.35N	0713335.86E
CC472	511233.52N	0713637.17E
OLGAS	520510.00N	0714507.00E